



Portfolio Development System

Portfolio Completion Standards

Portfolio Completion Standards provide schools and districts with a unique set of powerful tools for implementing portfolio development and tracking student achievement.

Clearly define objectives and expectations

- » With Portfolio Completion Standards, schools can set the criteria that students in each grade are required to complete
- » Students can then view the standards and track their own progress toward meeting those objectives

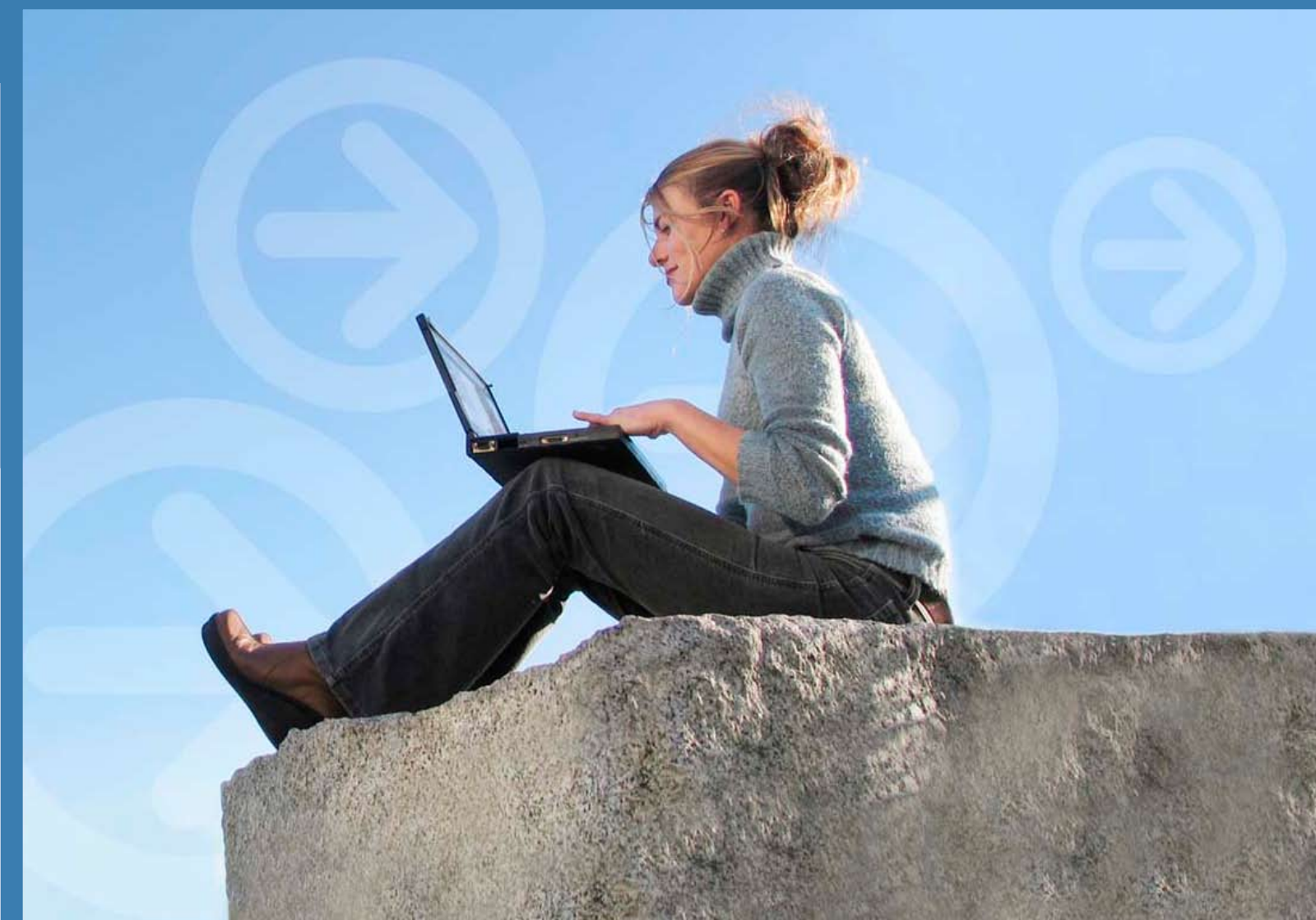
Quickly and easily monitor individual student progress

- » View students' completion status at a glance through the Student List and view detailed individual completion reports
- » Identify students who are not meeting expectations to determine where help is needed

Generate detailed aggregate reports

- » Track overall student achievement through a variety of Portfolio Completion Reports at the grade, school, and district level
- » Tailor the reports to include specific groups of students and export the results

The Portfolio Completion Standards Tool has been designed to be flexible. Standards can be set by grade level, allowing different aspects of portfolio development to be emphasized at different stages. It can also be used to meet the needs of a particular course, to reflect graduation requirements, or to institute a progressive system of portfolio development.



The Career Cruising Portfolio Tool helps students translate their career and education exploration into concrete plans for success. At the same time, career advisors, teachers, and administrators have access to real-time information and statistics to track student progress and achievement.

Pricing

	English	Bilingual*
1-Year Site License:	\$595	\$795
3-Year Site License:	\$495/year	\$695/year

* An English/Spanish version for the United States and an English/French version for Canada are now available.

To contact Career Cruising

For more information or to receive a FREE TRIAL of Career Cruising, please contact us:

- by phone: 1-800-965-8541
- by email: info@careercruising.com
- on the web: www.careercruising.com

“Career Cruising is the first career guidance program I’ve found that completely fits our needs. It has by far the best career portfolio component that I have ever seen.”

Tamara Sturdy, Career Advisor, Riverton High School





With seamless integration into the career and education planning process, Career Cruising's Portfolio Tool and Resume Builder lead students effortlessly through the steps of preparing for the world of work.



Tools for Students

➔ Store Career Exploration and Planning Information

Students can store all of their career and education exploration information in an easily accessible and organized way. Students can:

- » Save Career Matchmaker and other assessment results
- » Record their short and long term goals
- » Bookmark careers of interest and record their thoughts about each career
- » Bookmark schools that offer the education and training they need
- » Identify their career cluster and pathway interests
- » Track career planning activities, such as job shadowing, career fairs, campus visits, and internships

➔ Keep Track of Career Development Activities

The Portfolio Tool also provides students with a means of electronically storing a collection of material that demonstrates their knowledge, skills, and competencies. Students can:

- » Document their work and volunteer experience
- » Record extracurricular activities they participate in
- » Catalog their skills and abilities
- » Record awards or certifications they have received
- » Upload related documents, such as scanned artwork, essays, or letters of reference

➔ Create Career and Education Plans

The Portfolio Tool helps students bring together their career exploration and development activities to form concrete plans for success. Students can:

- » Create a personalized four-year high school plan
- » Create a prioritized post-secondary education plan
- » Use the information in their portfolio to create customized, professional resumes
- » Share their portfolio with parents, advisors, post-secondary admissions staff, and potential employers

“Our school district was looking for a way to motivate our 9th-12th grade students to help them plan for their future and make better connections between what they were learning in school and their future. Career Cruising's Portfolio Tool was the answer we were looking for!”

Cindy Miller, Coordinator, Career & Technology Education, Frenship ISD

Tools for Teachers, Advisors & Administrators

➔ Customize the Portfolio Tool

Flexibility is critical to ensuring effective portfolio development. With our Career Advisor Management System (CAMS), teachers and advisors can tailor Career Cruising to meet the needs of their students.

- » Set a variety of Portfolio Tool and Assessment Options, such as the sections of the Portfolio Tool available to students in each grade
- » Set career cluster and pathway integration options
- » Create a customized course list that students can use to generate their education plans
- » Add links to web resources and upload important documents that students can access from the Portfolio Homepage
- » Implement Portfolio Completion Standards

➔ View and Manage Student Information

CAMS provides a number of features to help teachers and advisors access and manage student portfolios.

- » View student portfolios and resumes
- » Create custom student lists by grade, advisor, and more
- » Export student data for use in other applications
- » Create an advisement log to track individual students' career exploration progress
- » Send messages to groups or individual students through the portfolio
- » Mass print student portfolios, resumes, and education plans

➔ Comprehensive Reporting Capabilities

Teachers, advisors, and administrators have access to a comprehensive reporting package through which they can view detailed aggregate reports, measure student progress, track usage, and identify intervention opportunities. This package allows advisors to:

- » View usage statistics, including individual portfolio login history
- » Generate reports for cluster or pathway interests, career planning activities, extracurricular activities, volunteerism, and work experiences
- » Analyze course demand forecasts and post-secondary plans
- » View detailed breakdowns showing which students have selected a particular school, career, or activity
- » Customize reports based on a variety of criteria, such as grade or advisor, and export the data
- » Send messages to students based on their interests, goals, and activities

The Career Advisor Management System and the Regional Reporting System help teachers, advisors, and administrators effectively implement and manage the use of Career Cruising at their schools.

